

Monoamines and Metabolites for Microdialysis

< HPLC Conditions >

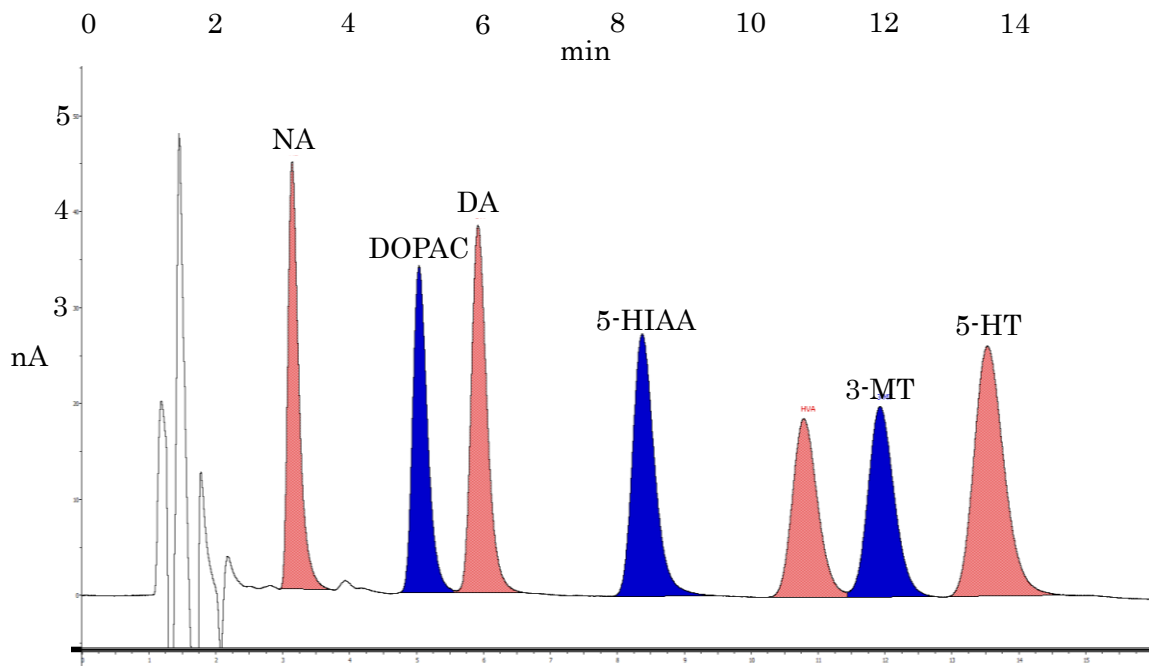
| | |
|----------------------------|--|
| HPLC-ECD system | HTEC-510 (ONLINE:EAS-20S, OFFLINE:M-510/514) |
| Separation Column | Eicompak SC-5ODS (φ2.1 × 150 mm) |
| Precolumn for mobile phase | PC-04-AC (φ4.0 × 5.0 mm) |
| Mobile Phase | 100 mM citrate-acetate buffer (pH 3.9) – Methanol (83 : 17, v/v) 140 mg/L sodium octane sulfonate (SOS) and 5 mg/L EDTA-2Na |
| Flow rate | 230 μL/min |
| Column Temp. | 25 °C |
| Working Electrode | WE-3G (Graphite) |
| Gasket | GS-25 |
| Applied potential | +700 mV(+600 ~ +750 mV) vs. Ag/AgCl |
| Time Constant | 3.0 sec |

Mobile Phase 1000 mL

| | | | |
|--|----------|-------------------------------|------------|
| 100 mM citrate-acetate buffer (pH 3.9) | Methanol | Sodium Octane Sulfonate (SOS) | EDTA · 2Na |
| 830 mL | 170 mL | 140 mg | 5 mg |

100 mM citrate-acetate buffer (pH 3.9) 1,700 mL

| | | |
|-------------------------|----------------|------------------|
| citric acid monohydrate | sodium acetate | H ₂ O |
| 14.71 g | 8.20 g | 1,700 mL |



Eicom Corporation HQ

113 Kita Enmenden-cho Shimotoba, Fushimi-ku Kyoto, Japan 612-8497

<http://www.eicom-usa.com>