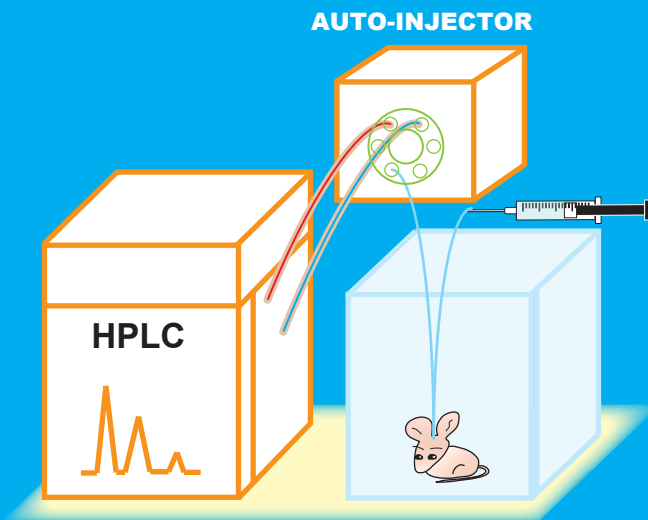


# The difference between **ONLINE** and **OFFLINE**

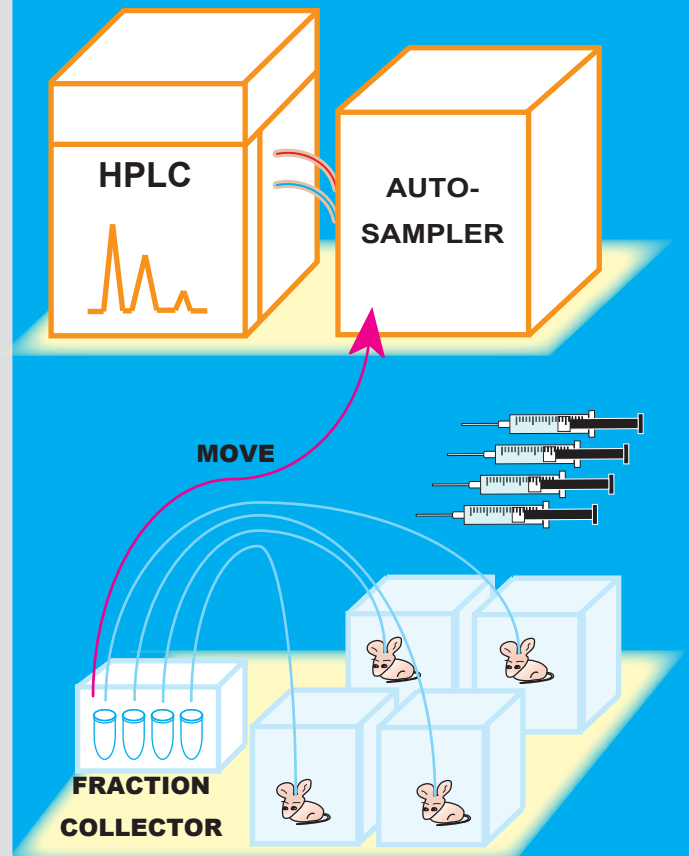
## ONLINE

### SINGLE and DIRECT



## OFFLINE

### MULTI and SEPARATION



## ONLINE

- The detector and the animal are **one to one**.  
→ No sample loss, No mislabeling.
- Samples are **directly** injected into the detector while remaining **fresh** without exposed to air.
- It is easy to relate of the behavior because of almost **real time monitor**.
- It is a simple system and **reasonable**.

## OFFLINE

- It is possible to collect from **multiple animals** at the same time.
- 96-hole sample rack can hold 24 x 4 animals, 48 x 2 animals or 96 x 1 animal.
- It supports automatic derivatization such as **amino acid analysis**.
- It is possible to **separate** sampling and analysis place.
- Sampling interval can be shorter than analysis time.