

GSH and Thiols for Microdialysis

< HPLC Conditions >

HPLC-ECD system	HTEC-510 (ONLINE :EAS-20S, OFFLINE :M-510/514)
Separation Column	Eicompak SC-5ODS (φ2.1 × 150 mm)
Precolumn for sample	PC-03-AC (φ3.0 × 4.0 mm)
Precolumn for mobile phase	PC-04-AC (φ4.0 × 5.0 mm)
Mobile Phase	100 mM phosphate buffer (pH 2.5) – Methanol (99 : 1, v/v) 100 mg/L sodium octane sulfonate (SOS) and 5 mg/L EDTA-2Na
Flow rate	230 μL/min
Column Temp.	25 °C
Working Electrode	WE-AU (Gold)
Gasket	GS-50
Applied potential	+600 mV vs. Ag/AgCl
Time Constant	3.0 sec

Mobile Phase 1000 mL

100 mM phosphate buffer (pH 2.5)	Methanol	Sodium Octane Sulfonate (SOS)	EDTA · 2Na
990 mL	10 mL	100 mg	5 mg

100 mM phosphate buffer (pH 2.5) 1000 mL

NaH ₂ PO ₄ ·2H ₂ O	phosphoric acid	H ₂ O
15.19 g	3 mL	1000 mL

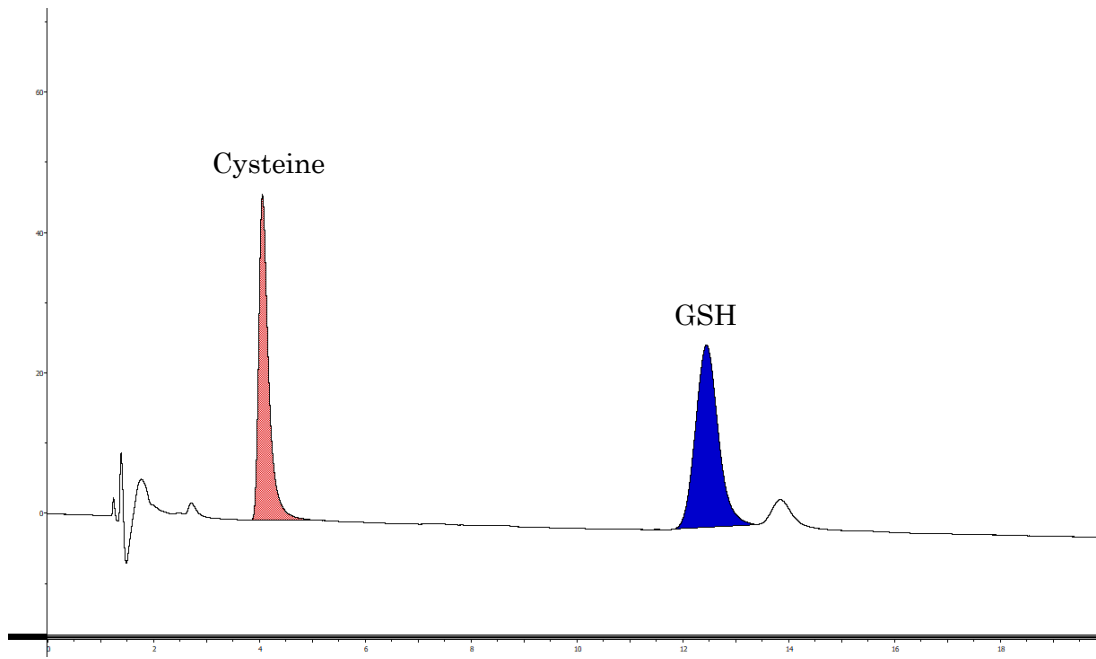


Fig. 1 Standard (100pg/inj.) Chromatogram.

Eicom Corporation HQ

113 Kita Enmenden-cho Shimotoba, Fushimi-ku Kyoto, Japan 612-8497

<https://www.eicom-usa.com>