

GSH and GSSG(WE-DM) for Microdialysis

< HPLC Conditions >

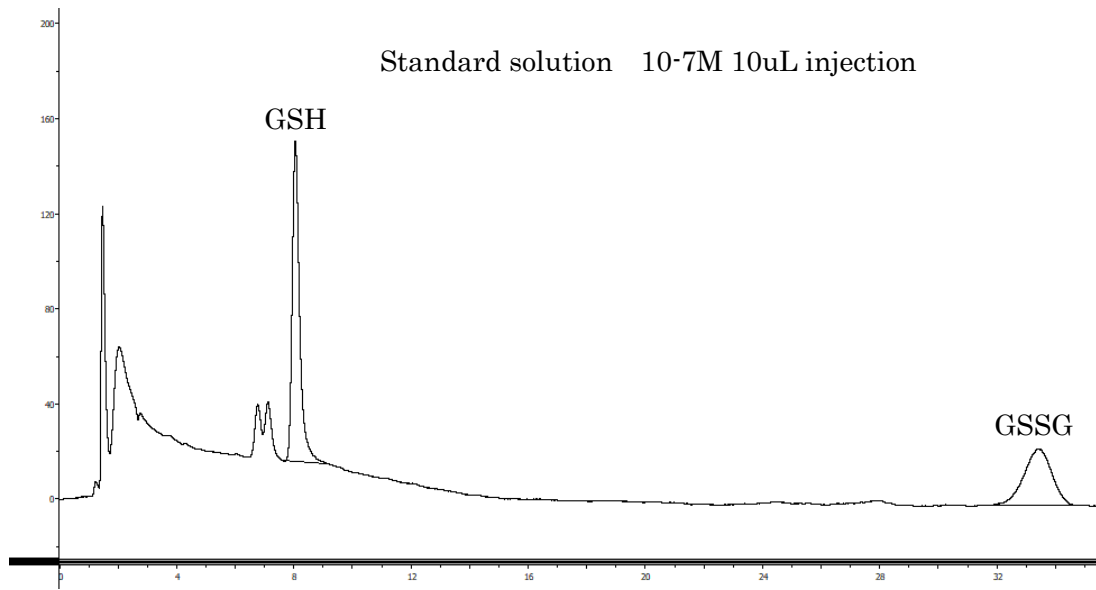
HPLC-ECD system	700series(Diamond Specifications) (ONLINE:EAS-20S, OFFLINE:M-510/514)
Separation Column	Eicompak SC-5ODS (φ2.1 × 150 mm)
Precolumn for Mobile Phase	PC-04-AC (φ4.0 × 5.0 mm)
Mobile Phase	20 mM phosphate buffer (pH 2.5) – Acetonitrile (99.5 : 0.5, v/v) 20 mg/L sodium octane sulfonate (SOS)
Flow rate	230 μL/min
Column Temp.	33 °C
Working Electrode	WE-DM (Diamond)
Gasket	GS-50
Applied potential	+1700 mV vs. Ag/AgCl
Time Constant	3.0 sec

Mobile Phase 1000 mL

20 mM phosphate buffer (pH 6.0)	Acetonitrile	Sodium Octane Sulfonate (SOS)
950 mL	50 mL	20 mg

20 mM phosphate buffer (pH 2.5) 1000 mL

NaH ₂ PO ₄ ·2H ₂ O	H ₃ PO ₄	H ₂ O
2.157 g	0.423 mL	1000 mL



Eicom Corporation HQ

113 Kita Enmenden-cho Shimotoba, Fushimi-ku Kyoto, Japan 612-8497

<https://www.eicom-usa.com>